



Product Innovation Report

Pack out Tray Cam-lever Security

This report informs you of a specific product innovation triggered by 1) Design flaw discovery, 2) Product obsolescence, 3) Requirement change, or 4) Other.

1. **Product Innovation Summary:** Modification of the Pack out Tray build procedure to ensure the cam-lever is securely fastened to the pack out tray rear extension.

2. **Reason for change (check one)**

- Design flaw discovery (explain):** For transport, the MK4 Pack out Tray is secured to the launcher with a cam handle, which locks the rear of the pack out tray under the carriage front beam. Without the cam lever, the packout tray cannot be locked down which can result in loss and damage of packed out components and endanger following vehicles.
- Sub-component obsolescence (identify component): _____
- Requirement change (identify): _____
- Other (explain): _____

3. **Customer Impact**

Open purchase order(s) affected: NA

Hood Tech Part Name: **PACKOUT TRAY** and **STUAS PACKOUT TRAY** Ref p/n (if known): 030-000047-000 and NA

Serial number/date of manufacture of first article affected: **DOM: 2015/01/20**

Cost increment: \$0

4. **Response**

No response is required. If more information is desired, please contact:

Cory Roeseler
135 Country Club Rd
Hood River, OR 97031
541 387-2255
cory@hoodtech.com

HOOD TECHNOLOGY
PROPRIETARY

Problem Identification

Example of Mark 4 Launcher damage linked to unsecured load during transport



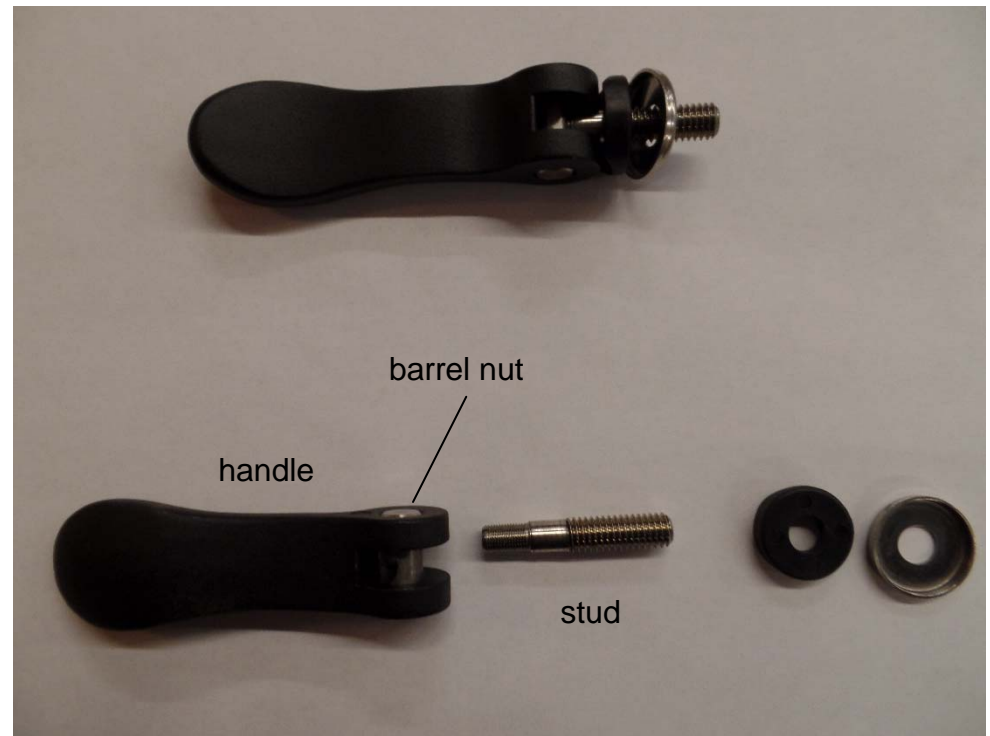
HOOD TECHNOLOGY
PROPRIETARY

Root Cause

For transport, the pack out tray is secured to the launcher with a stainless steel rear-extension slid under the forward beam of the carriage. The rear-extension is locked in place with a cam handle.

The cam handle is comprised of several parts. The handle and barrel-nut thread onto the stud, which allows the user to adjust the over-center force. When the cam lever is not “cammed down” or locked, the lever and barrel nut can become unthreaded from the stud and lost.

Once the lever is lost, the pack out tray cannot be secured to the launcher. It can fall off the trailer during transport, damaging removable launcher parts and endangering other vehicles.



Hood Tech Fix

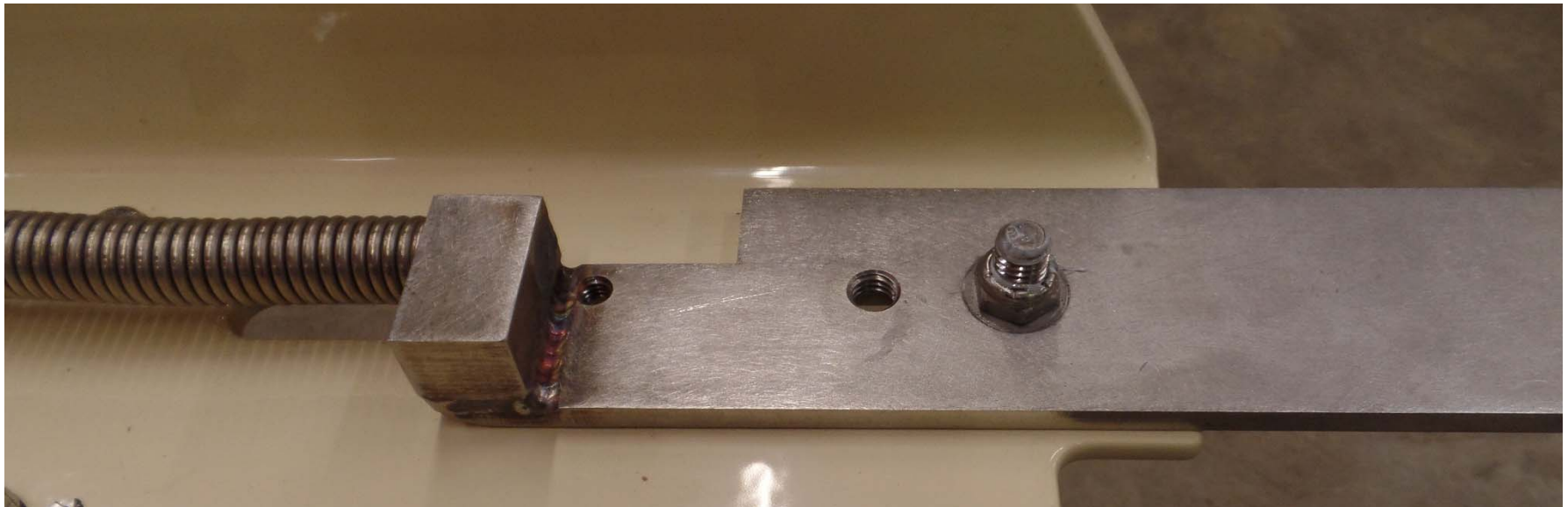
The stud is secured to the barrel-nut with Loc Tite 242 (blue) during assembly and factory-adjustment.



HOOD TECHNOLOGY
PROPRIETARY

Fix continued

Once the cam lever is adjusted and secured, a locking jam nut is installed on the back side of the stud, preventing the stud from backing out of the rear extension. This ensures that the lever will remain in the factory adjusted position.



HOOD TECHNOLOGY
PROPRIETARY

Retrofit Kit

p/n: MK4-CAM-HANDLE

The retrofit kit shown below is available from the aftermarket products page of Hood Tech's website.
www.hoodtechmechanical.com

Kit contents:

- Handle
- Barrel nut
- Stud
- Saddle washer
- Cup washer
- Loc tite 242
- Flat washer
- Nyloc nut, pre-lubricated with anti-seize grease



HOOD TECHNOLOGY
PROPRIETARY